

SPEC SHEET + MEASUREMENTS



Eddie Bauer® Women's Stretch Soft Shell Vest. EB547

Product photo



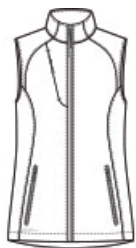
This fleece-lined vest offers next-level mobility and performance thanks to 3K/3K waterproof, breathable fabric with 4-way stretch and a durable water-repellent (DWR) finish.

- 90/10 polyester/spandex bonded to a waterproof film insert and 100% polyester fleece lining
- Interior storm flap
- Chin guard
- Invisible zippered chest pocket
- Reverse coil center front zipper
- Eddie Bauer logo zipper pull
- Reverse coil zippered hand pockets
- Embroidered Eddie Bauer logo on right hem
- Longer length

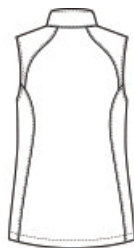
CARE INSTRUCTIONS

Machine Wash Cold With Like Colors. Do Not Use Fabric Softener. Do Not Bleach. Tumble Dry Low. Cool Iron. Do Not Dry Clean.

Sketches



front



back

SPEC SHEET + MEASUREMENTS



Eddie Bauer® Women's Stretch Soft Shell Vest. EB547

PRODUCT MEASUREMENTS

	XS	S	M	L	XL	2XL	3XL	4XL
Size	2	4/6	8/10	12/14	16/18	20/22	24/26	28/30
Body Length at Back	27	27 1/2	28	28 1/2	29	29 1/2	30	30 1/2
Bust	17 1/2	18 1/2	19 1/2	21	22 1/2	24	26	28

Body Length at Back: Measured from high point shoulder to finished hem at back.

Bust: Measured across the chest one inch below armhole when laid flat.

SIZE CHARTS

	XS	S	M	L	XL	2XL	3XL	4XL
Size	2	4/6	8/10	12/14	16/18	20/22	24/26	28/30
Bust	32-33	34-35	36-37	38-40	41-43	44-46	47-49	50-52

SPEC SHEET + MEASUREMENTS



Eddie Bauer® Women's Stretch Soft Shell Vest. EB547

HOW TO MEASURE



BUST

Measure under the arm and around the fullest part of the bust with arms down, keeping tape horizontal.

COLORS



Deep Black
PMS BLACK
C



Iron Gate
PMS 7540C



River Blue
Navy
PMS 533C